

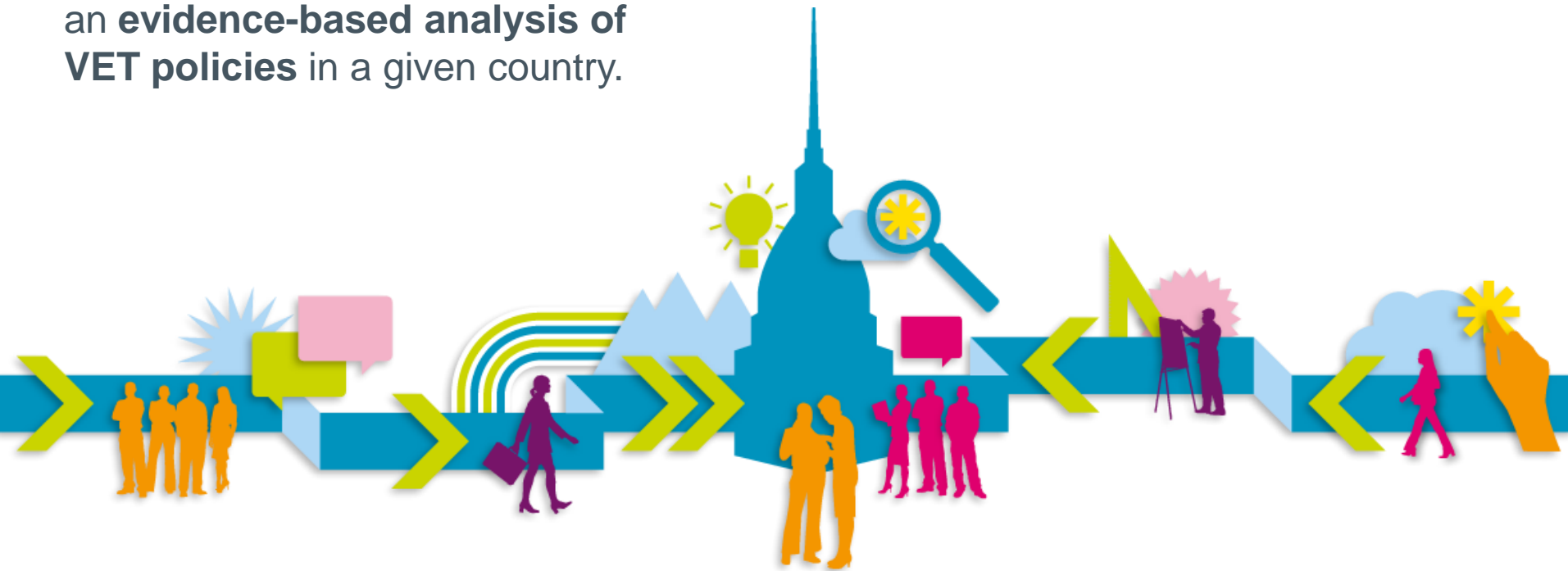
# TORINO PROCESS 2014



# THE TORINO PROCESS

## THE TORINO PROCESS IS

a **participatory process** leading to an **evidence-based analysis** of **VET policies** in a given country.



# PURPOSE

- To develop a **common understanding** of VET **vision, priorities and strategy** and **exploring options for implementation**.
- To develop **awareness, analysis capacities and policy prioritisation tools**.
- To **monitor the implementation** of long-term strategies and to **contribute to impact-oriented policy making**.
- Opportunities for **capacity development** and **policy learning** within and among partner countries and with EU.
- Results **inform** ETF's support strategy and the **EU's** external assistance.
- Countries are empowered to **coordinate donor contributions**.



# FOUR PRINCIPLES

01

**Ownership** of both process and results by partner country stakeholders.

02

Broad **participation** in the process as a basis for reflections and consensus building/**policy learning**.

03

**Holistic approach**, using a broad concept of VET for both young people and adults and adhering to a system approach, including links to economic and social demands.

04

**Evidence or knowledge-based** assessment.

# ANALYTICAL FRAMEWORK

## ADJUSTMENTS TO THE VERSION FROM 2012

### Structure

- Sub-sections to facilitate the report narrative

### VET context

- Focus on the socio-economic context in which VET operates

### Guidance

- Questions contain guidance through examples and explanations of the notions used

### Action

- More emphasis on policy progress and action

### Data

- Stronger link to the guiding questions

# NEW ORIENTATIONS IN TORINO PROCESS 2014

- Moving closer to the different phases of the **policy cycle**.
- Reinforced focus on **progress**.
- Contributing to **impact result-oriented policy making** in partner countries.
- Opening **possibilities for benchmarking**.
- **Enhancing the use of evidence** available.
- Increasing **country ownership** and **broadening participation**.
- Better identification of **capacity** needs and support actions.
- Better **documentation** of the process.